

nisi
YACHTS

Come in to your world



TRICON
MARINE

*“If a man insisted always on being serious,
and never allowed himself a bit of fun, he
would go mad without knowing it.”*

-Herodotus of Greece, First Historian, 5th Century B.C.





CASUAL OPULENCE
THAT SOOTHES AND STIMULATES THE SENSES.

NISI LIFE

COME IN TO YOUR WORLD

You've arrived. As you sail into the marina, heads begin to turn. NISI is beautiful. She's yours.

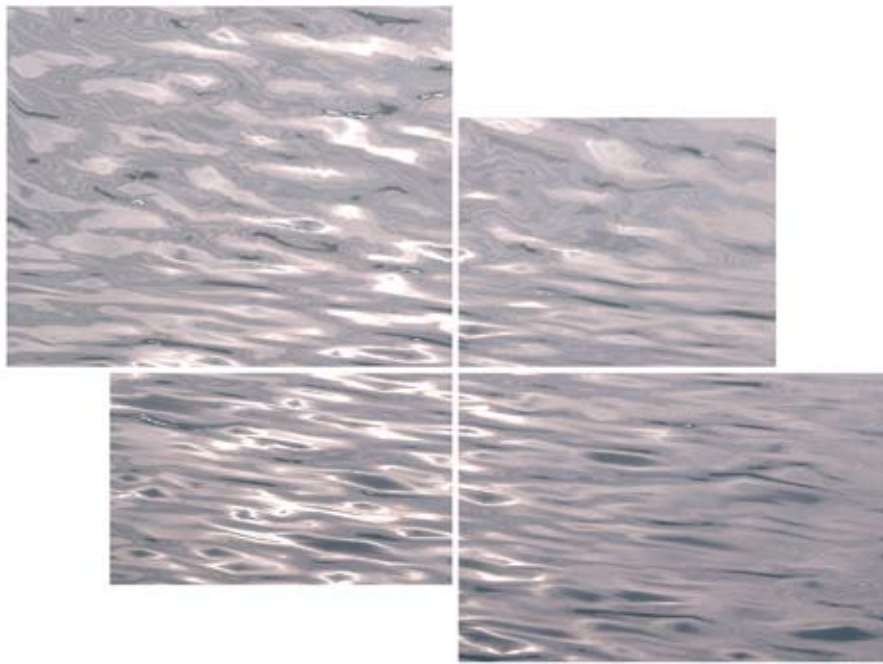
She's like no other. At ease in the South of France in summer, at home in Martinique in winter, she is a sophisticated traveling companion ready to share her journey with you.

From sundrenched isles and salty breezes to perfect parties underneath the majestic beauty of the moonlit sky, NISI is the unspoiled definition of irresistible attractiveness. Universally desired, this is your unique opportunity to make her yours.

NISI embraces everything you need for a superior lifestyle experience, a mixture of relaxed chic, contemporary cool and understated elegance. She's a one-of-a-kind blend of cutting-edge sensibility, excitement and style.



NISI 2600



NISI STYLE

LEGENDARY STYLING

An attractive blend of legendary style, sophisticated simplicity and versatility that is solitary in her class.

NISI seamlessly unites the lines of the past with the shape of the future. She's capable of turning heads everywhere she goes.

She's an instant modern classic that exudes charm. Beneath the surface, she's fully kitted out with today's state of the art technology, combining outstanding performance and handling with luxury and comfort.

“LEGENDARY STYLING
NAVAL ARCHITECTURE BY SETZER DESIGN.”



NISI 2400



NISI STYLE

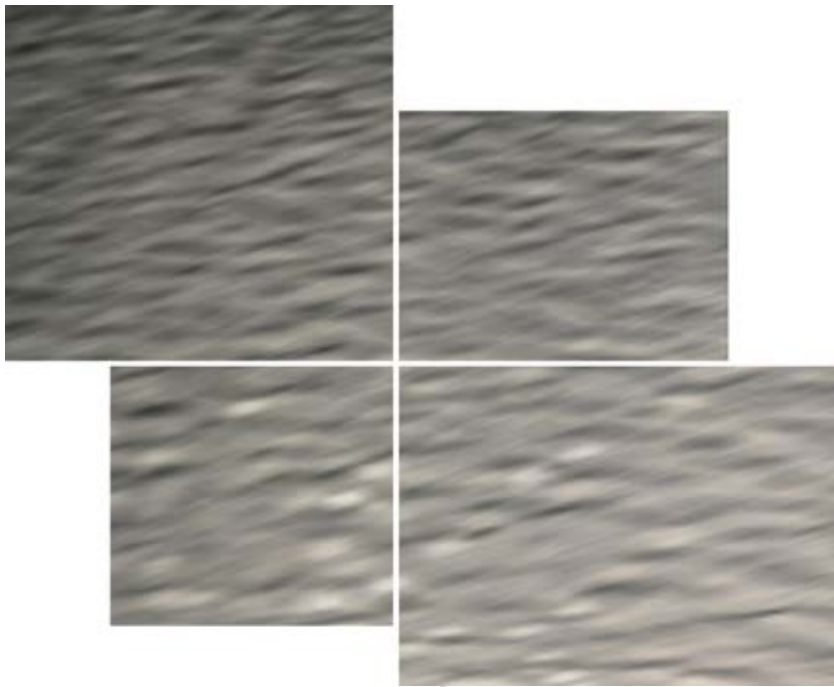
SOPHISTICATED SIMPLICITY

NISI reveals a tantalizing combination of sophisticated simplicity and breathtaking performance. Tricon has overseen the creation of NISI with the desires of today's yacht owners in mind, emphasizing simplicity and spirit.

Size and length are no longer taken as the key expression of an owner's needs. Now, owners are turning toward a yacht with a focus on design and function that is a unique expression of themselves.



NISI 2400



NISI STYLE

LEGENDARY STYLING

NISI is crafted on a limited production basis in three distinct models, or custom-built to a length tailored to suit your personal tastes and preferences.

Her plumb bow, stainless steel stanchions and life lines, and her observation deck atop a covered wheelhouse cloak 21st century engineering: a wave-piercing hull, pod propulsion, stabilizers and a cutting-edge Skyhook, an innovative station-keeping function that is the first of its kind in the recreational marine industry.

NISI defines superior refinement. You don't settle for less.

“ THE BEST YACHTSMEN HOLD A SPECIAL PLACE IN THEIR HEARTS FOR THE SIMPLE YACHT THAT CONNECTS THEM TO THE SEA. THE SIMPLE PLEASURE OF CASUAL ELEGANCE AND OPEN WATER PERFORMANCE IS REALIZED IN NISI. ”

-Christos Livadas, Tricon Marine Founder & CEO



NISI 2600



NISI STYLE

SOPHISTICATED SIMPLICITY

Luxurious lounging on decadent sunbeds. NISI offers you and your guests a new level of social relaxation. Surround yourself with provocative style and whimsical opulence.

The generous open plan of NISI blurs the lines between indoors and outdoors and allows you to customize the space with your choice of wildly romantic, sensual and dreamlike designs.

A SEAMLESS FLOW
BETWEEN INDOOR AND OUTDOOR ENVIRONMENTS.



Photo for illustration purposes only



INTERIORS

TRANQUIL SURROUNDINGS

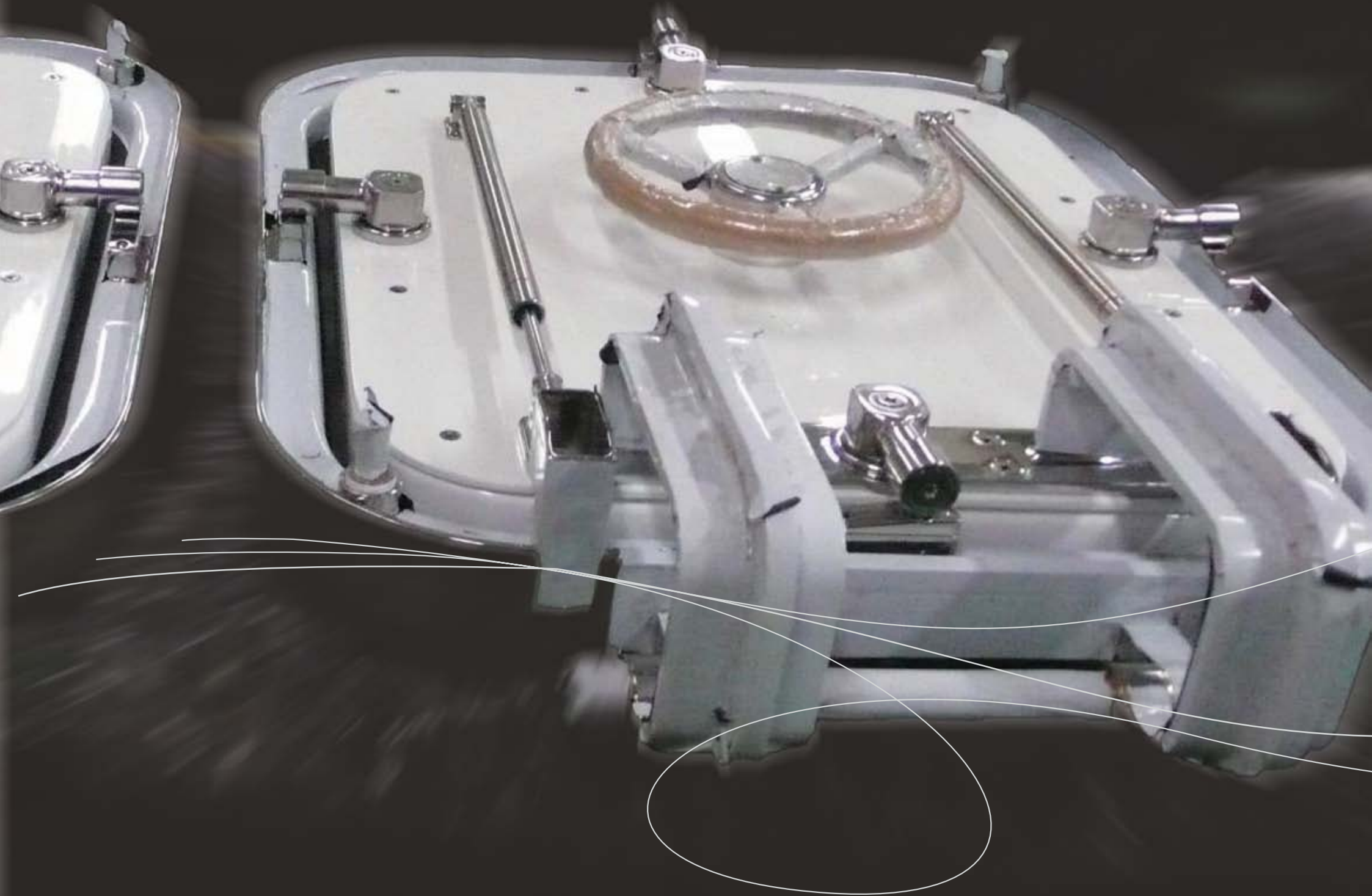
The rare art of world-class craftsmanship can be found throughout every detail in NISI.

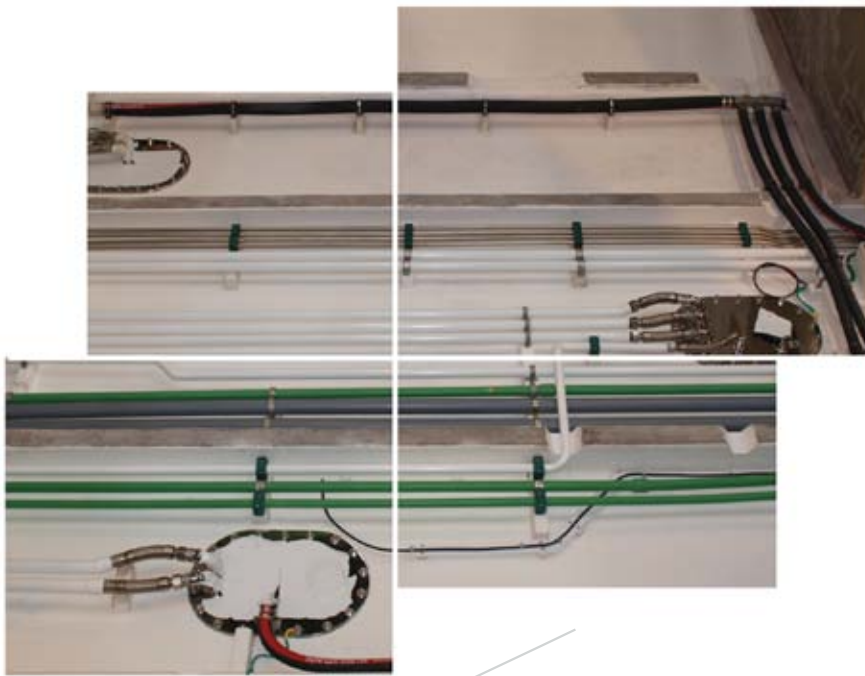
On NISI, space flows to create an expansive feel and large windows throughout reveal stunning views. Innovative genius has been infused into every detail of this light and airy expanse. The serene zen-like atmosphere soothes with teak and warm toned materials.

Combining exhilarating design elements with modern comfort and convenience, NISI mixes custom-designed furnishings and fixtures with a sophisticated color palette, creating a dynamic yet relaxed space. Unique accents and luxurious amenities allow for cool comfort.

YOU ARE UNIQUE

NISI DESIGN PROFESSIONALS CAN COLLABORATE WITH YOU TO CREATE A LAYOUT AND DESIGN THAT IS AN EXTENSION OF YOUR PERSONAL SPACE.





ENGINEERING

CUSTOM BUILT. BUILT TO LAST.

Systems are fitted to luxury superyacht and commercial safety standards using certified materials and equipment.

All water, fuel, fire-fighting, emergency bilge, and hydraulic systems are fitted entirely with metal plumbing. Her engine room is encased with aerospace insulation, tested to 1,000°F (538°C), to control heat from reaching guest quarters in the event of a fire for a minimum of 30 minutes.

Salon and other floors are floated with added acoustic insulation. The entire interior forward section of the hull along her chines and waterline is coated with advanced sound deadening material that further reduces the noise of water-slap, while underway and at anchor. NISI exceeds the highest level of safety standards and engineered quality.



**NISI, BUILT TO RINA CHARTER CLASS
& MCA COMMERCIAL (MGN280) CERTIFICATION.**

NISI 2400 is the first and only yacht in the world under 24-meters to achieve these standards. The advanced composite Kevlar hull is independently tested and certified to exceed class society requirements.

nisi
2400



observation deck



main deck



accommodation deck



SPECIFICATIONS

NISI 2400

GENERAL SPECIFICATIONS

LOA: 78' (23.6m)
LWL: 74' (22.5m)
Beam: 19' (5.75m)
Draft: 3.6' (1.12m)

Displacement: 80,000lb (36.6 ton) dry

Fuel: 1,409 gallons (5,334L)
Fresh Water: 338 gallons (1,272L)
Black Water: 400 gallons (1,514L)
Grey Water: 200 gallons (757L)

Accommodations:

Five cabins
8 guests + 2 crew

Concept & Design:

Tricon Marine and Setzer Design Group

Classification:

RINA Charter + MCA Commercial (MGN 280)

PERFORMANCE

Top Speed: 28kt*
High-Speed Cruise: 25kt
Range: 1,500nm @ 9kt passage making speeds
Performance with larger engine option: 33 knots est.

Propulsion:

1,800hp - 2,000hp options

Engine Options:

2 x 1,000hp: CAT-C18/ZF-POD or Volvo/IPS
3 x 600hp: Cummins/Zeus or Volvo/IPS

Actuated Stability System (optional):

TRAC, by American Bow Thruster

**Performance estimates based on 3 x 600hp
Cummins/Zeus package (1,800hp).*

nisi
2600



observation deck



main deck



accommodation deck



Master Stateroom
option "B"



SPECIFICATIONS

NISI 2600

GENERAL SPECIFICATIONS

LOA: 84' (25.5m)
LWL: 80' (24.4m)
Beam: 19' (5.7m)
Draft: 3.6' (1.12m)

Displacement: 93,000lb (42.1 ton) dry

Fuel: 1,600 gallons (6,057L)
Fresh Water: 450 gallons (1,703L)
Black Water: 400 gallons (1,514L)
Grey Water: 250 gallons (946L)

Accommodations:

Five cabins
8 guests + 2 crew

Concept & Design:

Tricon Marine and Setzer Design Group

Classification:

RINA Charter + MCA Commercial (MGN 280)

PERFORMANCE

Top Speed: 30+ kt
High-Speed Cruise: 25 kt
Range: 1,500 nm @ 9 kt passage making speeds

Propulsion:

2x 1,100hp CAT C-18 (2,200hp total)

Actuated Stability System (optional):

TRAC, by American Bow Thruster

Optional Layouts Available:

- Galley Up, with additional utility room
- 3 or 4 staterooms

FOR MORE VISIT:
www.triconmarine.com/nisi

OWNERSHIP ENQUIRIES:
nisi@triconmarine.com



TRICON
MARINE

Styled for Fun. Built to Conquer.



TRICON

MARINE

Styled for Fun. Built to Conquer.

NASSAU - PALM BEACH - ATHENS - HONG KONG